

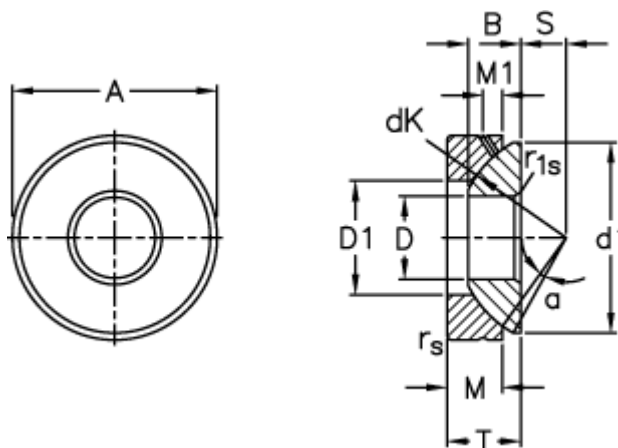
Data Sheet



Article number: 03511040

Description: Fluro Rod end GE 40AX

Measures



A	= 105 0 -0,015	M1	= 9
B	= 27	rs, r1s min	= 1
D	= 40 0 -0,012	S	= 24.5
d1 max	= 97	Static axial load C0 (kN)	= 1860
D1 min	= 59	T	= 32 +0,25 -0,40
dK	= 114	Tilt angle	= 6
Dynamic axial load C (kN)	= 375	Weight	= 1590
M	= 21.5		